

SN-TPC4201KT(II)

Temperature Alarm Thermal Network Camera



- Uncooled IRFPA Microbolometer
- Temperature detection
- Effective Pixels 400 × 300
- Sensitivity 40mK
- 8/15/25/35/50mm lens optional
- Infrared detection wavelength 8-14um
- Support 8 areas temperature Detection
- Support 17 color control
- Support DVE image Enhance
- Standalone operating

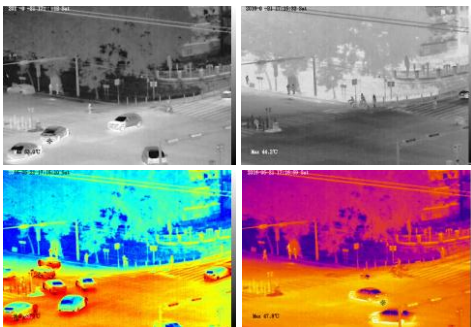
System Overview

Featuring a fixed lens bullet camera, this series provides an all-in-one solution that is especially beneficial for long distance video surveillance in outdoor applications. Together with Thermal technology, the camera's long range capabilities are able to be utilized even at night.

Functions

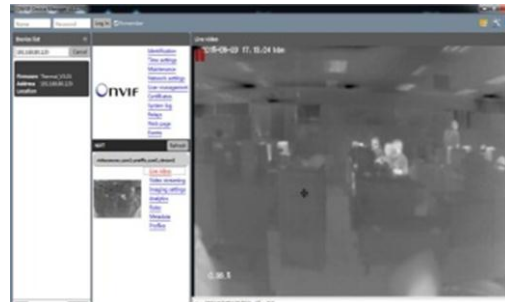
Image Color Modes

White hot/black hot/iron bow/rainbow up to 17 modes



Compatibility

ONVIF Compatible, also provide CGI and SDK for integration



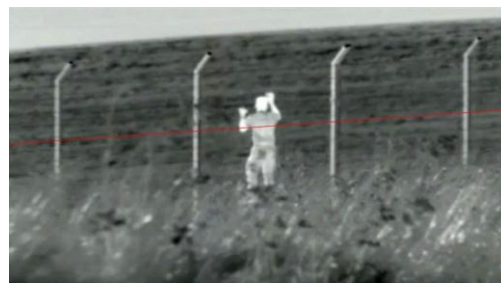
Temperature Detection

Maximum temperature measure from area, up to 8 areas



IVS Security

Video Analytics with Perimeter ,Single Virtual Fences ,Double Virtual Fences ,Object Left ,Object Removed



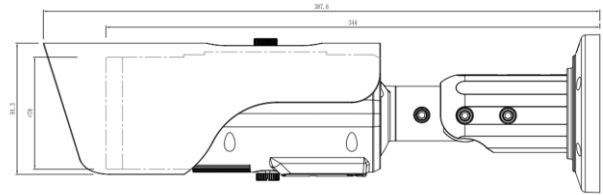
Technical Specification

Thermal Camera					
Detector Type	Uncooled IRFPA Microbolometer				
Effective Pixels	400(H) × 300(V)				
Pixel Size	20um				
Thermal Sensitivity (NETD)	40mK @F1.0, 300K				
Spectral Range	8~14um				
Image Setting	Polarity LUT/ DVE/ Mirror/ FCC/ /3D DNR Brightness/Contrast/ ROI				
Color Palettes	Black-Heat /White-Heat/Rainbow/Iron-Red up to 17 modes				
Pan/Tilt/ Rotation Range	Pan:0°~360°; Tilt:0°~90°; Rotation:0°~360				
Thermal Lens					
Lens Type	Fixed				
Focus Control	Manual Focus				
Focal Length	8mm	15mm	25mm	35mm	50mm
F No.	F1.0	F1.0	F1.0	F1.0	F1.0
Angle of View	H: 43.6° V:18°	H: 24° V:18°	H: 14.6° V:11°	H: 10.5° V:7.8°	H: 7.3° V:5.5°
Temperature Detect Distance Fire(0.8m*0.8m)	160m	300m	500m	700m	1000m
Recognition Distance Man(1.8m*0.5m)	120m	225m	375m	525m	750m
Recognition Distance Vehicle(2.3m*2.3m)	260m	500m	830m	1160m	1660m
Video and Audio					
Compression	H.265, H.264, MJPEG				
Frame Rate	Main Stream: D1 @25/30fps				
	Sub Stream: CIF @25/30fps				
Bit Rate Control	CBR/VBR				
Bit Rate	100Kbps~6Mbps				
Region of Interest	Off / On (8 Zone, Rectangle)				
Electronic Image Stabilization(EIS)	N/A				
Digital Zoom	16x				
Mirror	Support				
Defog	Support				
Motion Detection	Support				
Privacy Masking	Off / On (5 Area, Rectangle)				
DVE Image Enhance	Support				
Audio Compression	G.711, AMR, RAW_PCM (Optional)				
Intelligence					
Intelligent Functions	Motion detection, Disk alarm, I/O alarm, Temperature alarm				
IVS	Perimeter ,Single Virtual Fences ,Double Virtual Fences ,Object Left ,Object Removed				

Temperature Detection	
Temperature Detection	Point detection, Area detection
Temperature Alarm	Over temperature alarm, Temperature difference alarm
Precision	±2℃ / ±2%
Detection Area	Support 8 areas (8 target)
Response Time	≤30ms
Effective temperature working environment	-10 ℃ ~ 50 ℃ (14°F ~ 122 °F)
Theory of temperature measurement range	-30 ℃ ~ 200 ℃ (-22°F ~ 392 °F)
Temperature display mode	Temperature target >5℃, Display absolute temperature value; Temperature target ≤5℃, Display relative temperature value (temperature difference DEV = highest value - average)
NETWORK	
Ethernet	RJ-45 (10/100Base-T)
Protocols:	IPv4/IPv6 ,HTTP,RTSP/RTP/RTCP, TCP/UDP, DHCP, DNS, PPPOE, SMTP, SIP ,802.1x
Interoperability	ONVIF, CGI
Streaming Method	Unicast
Max. User Access	10 Users
Edge Storage	NAS Local PC for instant recording Mirco SD card 128GB
Web Viewer	<IE11, Chrome, Firefox
Web Language	English, Chinese, Polish, Italian, Portuguese, Spanish, Russian, French, Czech, Hungarian
INTERFACE	
Ethernet	1 Ethernet (10/100 Base-T) RJ-45 Connector
Audio Interface	1ch Audio In,1ch Audio Out
Alarm	2ch Alarm In,2ch Alarm Out
RS485	Support
BNC Output	Support
Reset Button	Support
GENERAL	
Power Supply	DC12V/POE
Power Consumption	Max 5W
Operating Temperature	-10 ℃ ~ 55 ℃ (14°F ~ 131 °F)
Storage Conditions	0~ 90% RH
Certifications	CE /FCC
Ingress Protection	IP66
Casing	Metal
Dimensions	φ 110x388mm
Net Weight	1900g

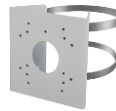
Ordering Information		
Type Part	Number	Description
SN-TPC4201KT(II)	SN-TPC4201KT/F8(II)	Thermal: 400×300 8mm Fixed lens
	SN-TPC4201KT/F15(II)	Thermal: 400×300 15mm Fixed lens
	SN-TPC4201KT/F25(II)	Thermal: 400×300 25mm Fixed lens
	SN-TPC4201KT/F35(II)	Thermal: 400×300 35mm Fixed lens
	SN-TPC4201KT/F50(II)	Thermal: 400×300 50mm Fixed lens

Dimensions(mm)



Accessories

Optional:



SN-CBK627B
Pole Mount



SN-CBK633
Junction Box