

# SN-T5

## Bispectral Temperature Detection Network Camera



- Uncooled IRFPA Microbolometer
- Thermal and Visible image temperature display
- Effective Pixels 400×300
- Sensitivity 40mK
- Thermal: 8mm Fixed lens, Visible: 2.7-12mm motorized lens
- Infrared detection wavelength 8-14um
- Support Spot, Line, Area temperature Detection
- Support 17 color control
- Support DVE image Enhance
- Standalone operating

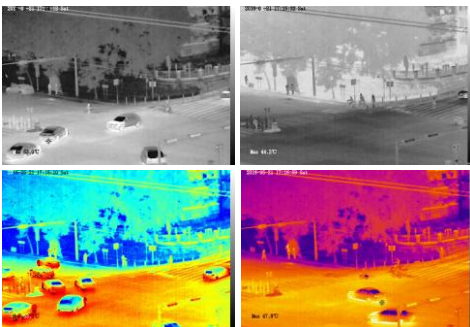
### System Overview

Featuring a fixed lens Dual Vision camera, this series provides an all-in-one solution that is especially beneficial for long distance video surveillance in outdoor applications. Together with Thermal technology, the camera's long range capabilities are able to be utilized even at night.

### Functions

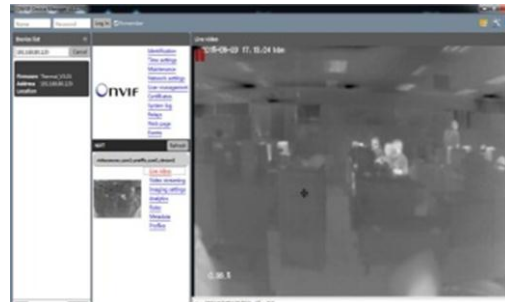
#### Image Color Modes

White hot/black hot/iron bow/rainbow up to 17 modes



#### Compatibility

ONVIF Compatible, also provide CGI and SDK for integration



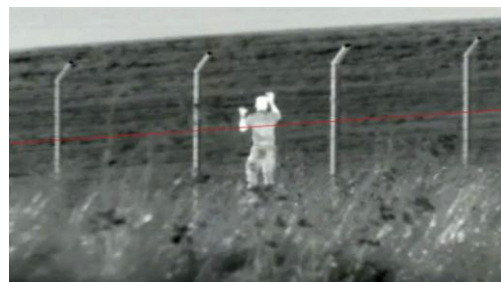
#### Temperature Detection

Maximum temperature measure from area, up to 8 areas



#### IVS Security

Video Analytics with Smart Body Detection, Perimeter , Single Virtual Fences ,Double Virtual Fences ,Object Left ,Object Removed



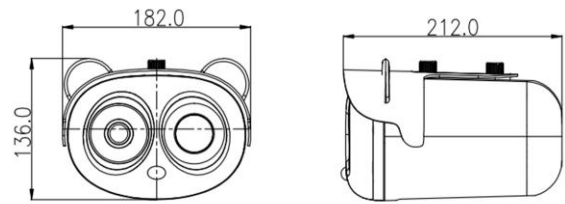
# Technical Specification

Thermal Camera	
Detector Type	Uncooled IRFPA Microbolometer
Effective Pixels	400(H) × 300(V)
Pixel Size	17um
Thermal Sensitivity (NETD)	40mK @F1.0, 300K
Spectral Range	8~14um
Image Setting	Polarity LUT/ DVE/ Mirror/ FCC/ /3D DNR Brightness/Contrast/ ROI
Color Palettes	Black-Heat /White-Heat/Rainbow/Iron-Red up to 17 modes
Thermal Lens	
Lens Type	Fixed
Focus Control	Manual Focus
Focal Length	8mm
F No.	F1.0
Angle of View	H: 46°, V: 35°
Temperature Detect Distance Fire(0.8m*0.8m)	160m
Recognition Distance Man(1.8m*0.5m)	120m
Recognition Distance Vehicle(2.3m*2.3m)	260m
Visible Camera	
Image Sensor	1/1.9" Sony CMOS
Effective Resolution	1920(H) × 1080(V)
Shutter Speed	1/50 ~ 1/64,000s
Min. Illumination	Color: 0.1Lux @(F1.2, AGC ON, IRC ON), B/W: 0.01Lux @(F1.2, AGC ON, IRC OFF)
S/N Ratio	More than 60dB
Visible Lens	
Focal Length	2.8 ~ 12mm
Max Aperture	F1.6~ F2.9
Angle of View	105°~ 32°
Optical Zoom	Motorized
Focus Control	Motorized
Close Focus Distance	0.2m
Video and Audio	
Compression	H.265, H.264, MJPEG
Frame Rate	Main Stream: Thermal: D1 @25/30fps Visible: 1920×1080/1280×720 @25/30fps Sub Stream: Thermal: CIF @25/30fps Visible: D1/VGA/640×360/CIF/QCIF/QVGA @25/30fps
Bit Rate Control	CBR/VBR

Bit Rate	Thermal: 100Kbps~6Mbps Visible: main stream: 500Kbps~10Mbps; sub stream: 100Kbps~6Kbps
Region of Interest	Off / On (8 Zone, Rectangle)
Electronic Image Stabilization(EIS)	N/A
Digital Zoom	16x
Mirror	Support
Defog	Support
Motion Detection	Support
Privacy Masking	Off / On (4 Area, Rectangle)
DVE Image Enhance	Support
Audio Compression	G.711, AMR, RAW_PCM (Optional)
Intelligence	
Smart Alarm	Motion detection, Disk alarm, I/O alarm, Temperature alarm, IVS alarm
IVS	Smart Body Detection, Perimeter, Single Virtual Fences, Double Virtual Fences, Object Left, Object Removed
Temperature Detection	
Detection Mode	Spot, Line, Area
Detection Preset	Spot: 20, Line: 2, Area: 16
Temperature Alarm	Over temperature alarm, Temperature difference alarm
Accuracy	≤ 0.3 °C
Response Time	≤30ms
Theory of temperature measurement range	-20 °C ~ 60 °C (-4°F ~ 140°F)
Temperature display mode	Temperature target >5°C, Display absolute temperature value; Temperature target ≤5°C, Display relative temperature value (temperature difference DEV = highest value - average)
Network	
Ethernet	RJ-45 (10/100Base-T)
Protocols:	IPv4/IPv6, HTTP, RTSP/RTP/RTCP, TCP/UDP, DHCP, DNS, PPPOE, SMTP, SIP, 802.1x
Interoperability	ONVIF, CGI
Streaming Method	Unicast
Max. User Access	10 Users
Edge Storage	NAS Local PC for instant recording Micro SD card 128GB
Web Viewer	<IE11
Web Language	English, Chinese, Polish, Italian, Portuguese, Spanish, Russian, French, Czech, Hungarian
Interface	
Ethernet	1 Ethernet (10/100 Base-T) RJ-45 Connector
Audio Interface	1ch Audio In, 1ch Audio Out
Alarm	2ch Alarm In, 2ch Alarm Out

RS485	Support
BNC Output	Support
Reset Button	Support(Built-in)
<b>General</b>	
Power Supply	DC12V/POE
Power Consumption	Max 10W
Operating Temperature	-30 °C ~ 60 °C (-22°F ~ 140 °F)
Storage Conditions	0~ 90% RH
Certifications	CE /FCC
Ingress Protection	IP66
Casing	Metal
Dimensions	212×182×136mm
Net Weight	2Kg

## Dimensions(mm)



## Accessories

Optional: N/A